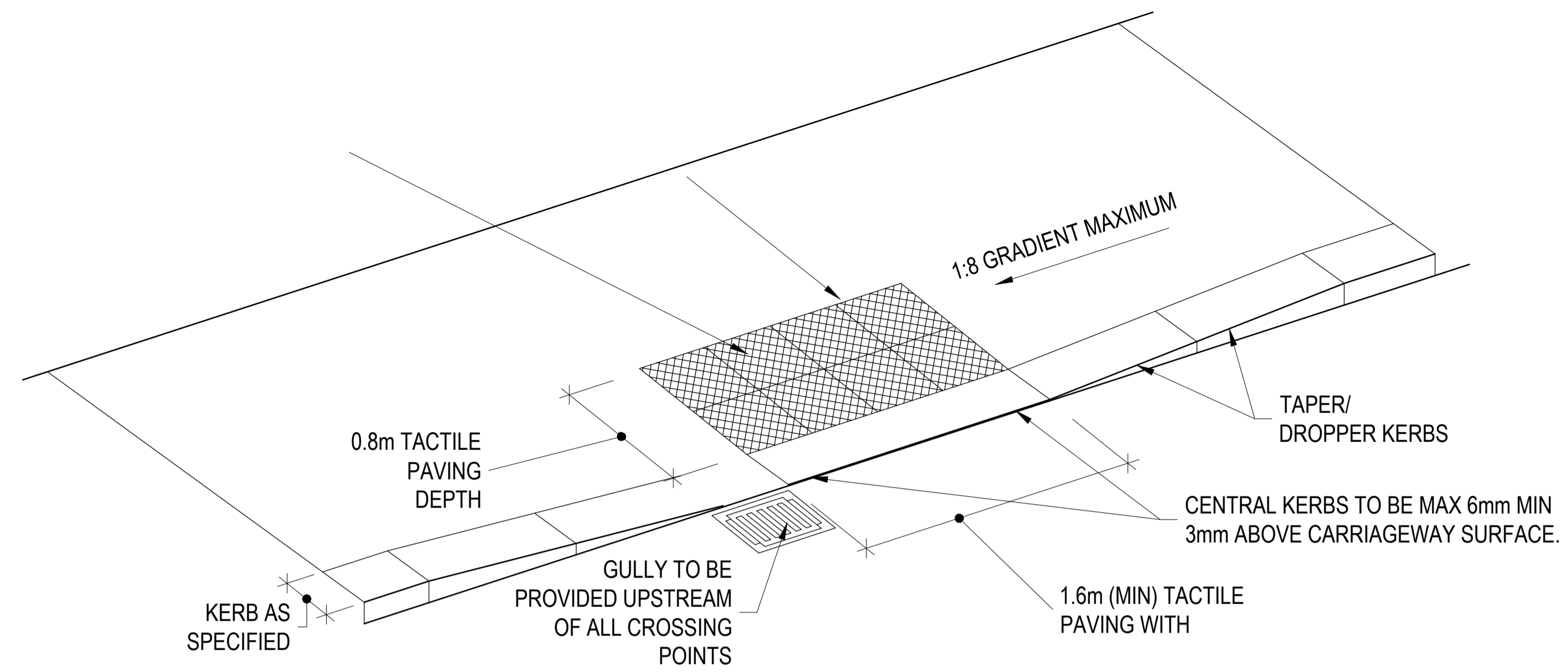


TYPICAL SECTION THROUGH DISHED CROSSING DETAIL
SCALE 1:20

FIGURE 2B



UNCONTROLLED DISHED CROSSING WITH TACTILE PAVING
SCALE 1:25

FIGURE 2A

ON ORIGINAL

© COPYRIGHT OF THIS DRAWING IS RESERVED BY DBFL CONSULTING ENGINEERS. NO PART SHALL BE REPRODUCED OR TRANSMITTED WITHOUT THEIR WRITTEN PERMISSION.

NO CHANGES OF WHATSOEVER NATURE ARE TO BE MADE TO ANY DETAILS SET OUT OR CONTAINED IN ANY DBFL SPECIFICATIONS OR DRAWINGS UNLESS THE EXPRESS CONSENT HAS BEEN OBTAINED IN ADVANCE, IN WRITING, FROM DBFL.

NOTES:

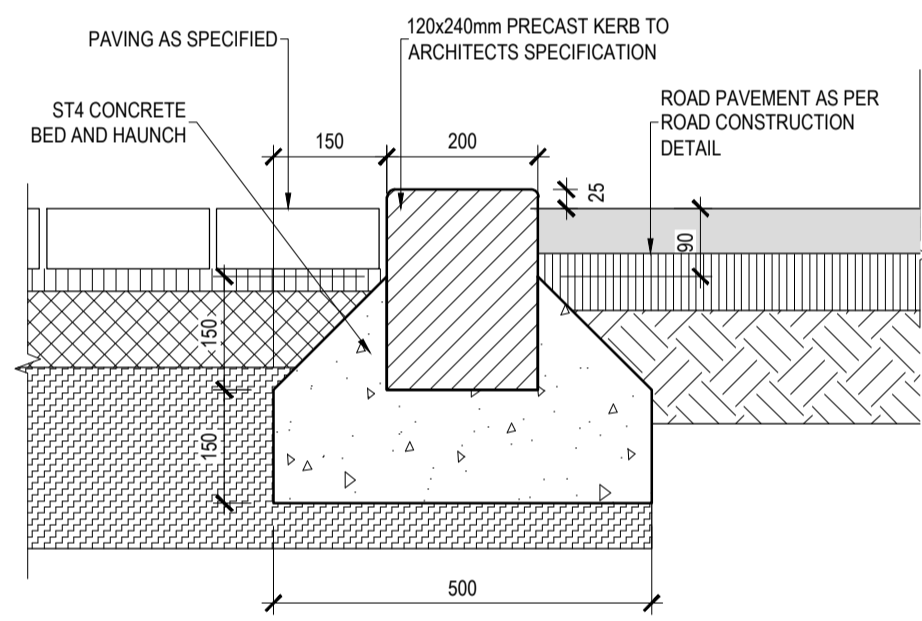
- ALL WORKS TO BE CONSTRUCTED IN ACCORDANCE WITH THE NRA SPECIFICATION FOR ROAD WORKS UNLESS OVERRIDDEN BY LOCAL AUTHORITY STANDARDS
- CLOSE GRADED SURFACE COURSE MACADAM SHALL COMPLY WITH THE REQUIREMENTS OF CLAUSE 912 OF THE NRA'S 'SPECIFICATION FOR ROAD WORKS' AND SHALL SATISFY THE REQUIREMENTS OF TABLE 9/2. IT SHALL BE LAID & COMPACTED IN ACCORDANCE WITH CLAUSE 901 & CLAUSE 702.
- DENSE BITUMEN MACADAM BINDER COURSE SHALL COMPLY WITH THE REQUIREMENTS OF CLAUSE 906 OF THE NRA'S 'SPECIFICATION FOR ROAD WORKS' & SHALL SATISFY THE REQUIREMENTS OF TABLE 9/1. IT SHALL BE LAID & COMPACTED IN ACCORDANCE WITH CLAUSE 901 & CLAUSE 702.
- SUB-BASE MATERIAL SHALL COMPLY WITH CLAUSE 808 GRANULAR MATERIAL TYPE B OF NRA'S SPECIFICATION FOR ROAD WORKS (SRW) & SHALL SATISFY THE REQUIREMENTS OF TABLE 8/4 & 8/2.
- SUB FORMATION & CAPPING MATERIAL SHALL COMPLY WITH CLAUSE 613 OF THE NRA'S 'SPECIFICATION FOR ROAD WORKS' & SHALL SATISFY THE REQUIREMENTS OF TABLE 6/1 & 6/2.
- STONE BLINDING WITH 2-6.3mm AGGREGATE SHALL MEET THE FOLLOWING GRADINGS, IN ACCORDANCE WITH IS EN 13242

BS SIEVE SIZE (mm)	% BY MASS PASSING
14	100
10	98-100
6.3	80-99
2.0	0-20
1.0	0-5

- CRUSHED STONE WITH 4-20mm AGGREGATE SHALL MEET THE FOLLOWING GRADINGS, IN ACCORDANCE WITH IS EN 13242

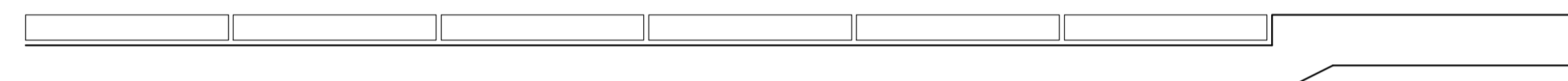
BS SIEVE SIZE (mm)	% BY MASS PASSING
40	100
31.5	98-100
20	90-99
10	25-70
4	0-15
5	0-5

- ANY ROADS PROPOSED TO BE USED FOR CONSTRUCTION TRAFFIC ARE TO HAVE INCREASED DEPTH OF SUB-BASE FOR THE DURATION OF CONSTRUCTION IN ACCORDANCE WITH DBFL SPECIFICATIONS.
- ALL WORKS SHALL BE COMPLETED IN ACCORDANCE WITH THE REQUIREMENTS OF THE LOCAL AUTHORITY.
- ALL GEOTEXTILES TO BE LAID IN ACCORDANCE WITH MANUFACTURERS SPECIFICATIONS.
- ALL PERMEABLE PAVING SUB-FORMATION TO BE LAID TOWARD DRAINAGE PIPEWORK.



DROP KERB DETAIL (ROAD TO PARKING BAY)
SCALE 1:10

FIGURE 2D



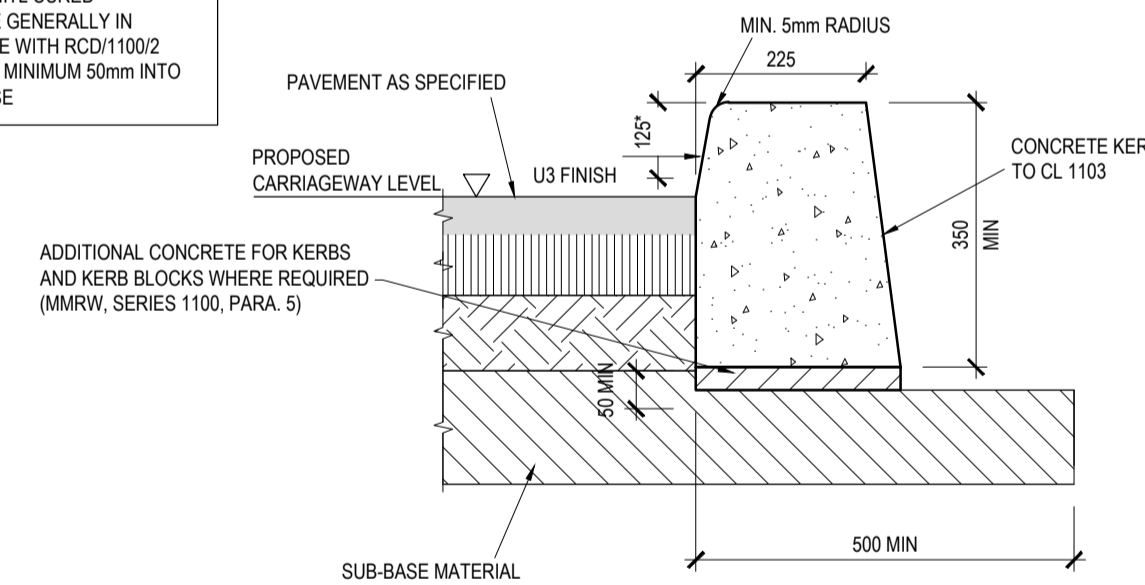
CYCLEPATH & FOOTPATH TACTILE PAVING CROSS-SECTION

SCALE 1:10

FIGURE 2C

NOTES

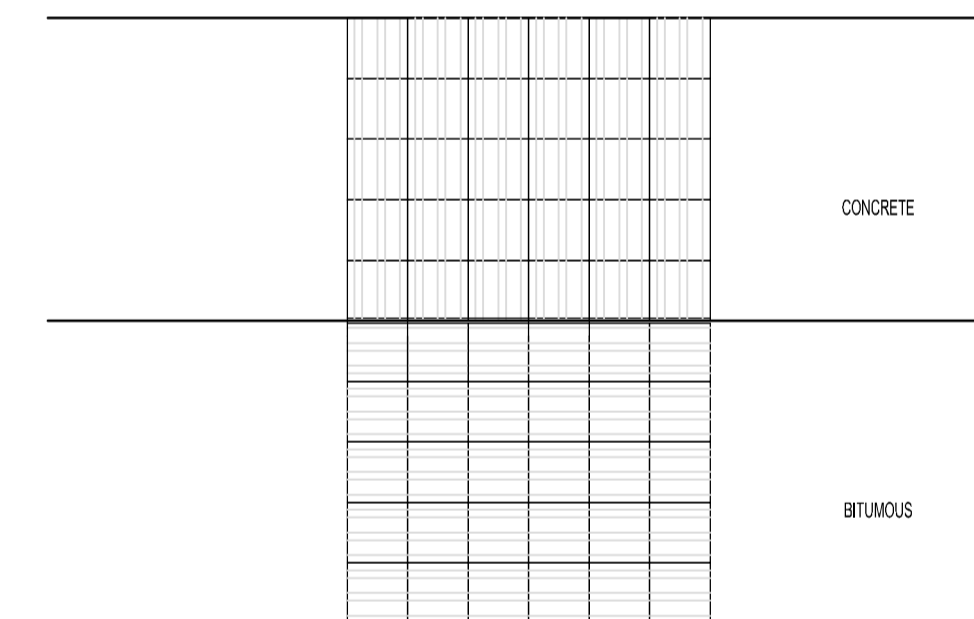
- IN SITU CONCRETE KERBS SHALL COMPLY WITH THE RECOMMENDATIONS OF BS 5931
- KERBS SHALL BE PROTECTED FROM THE EFFECTS OF ADVERSE WEATHER UNTIL CURED
- KERBS TO BE GENERALLY IN ACCORDANCE WITH RCD1100/2 AND EXTEND MINIMUM 50mm INTO THE SUB-BASE



PROPOSED INSITU CONCRETE KERB

SCALE 1:10

FIGURE 2E



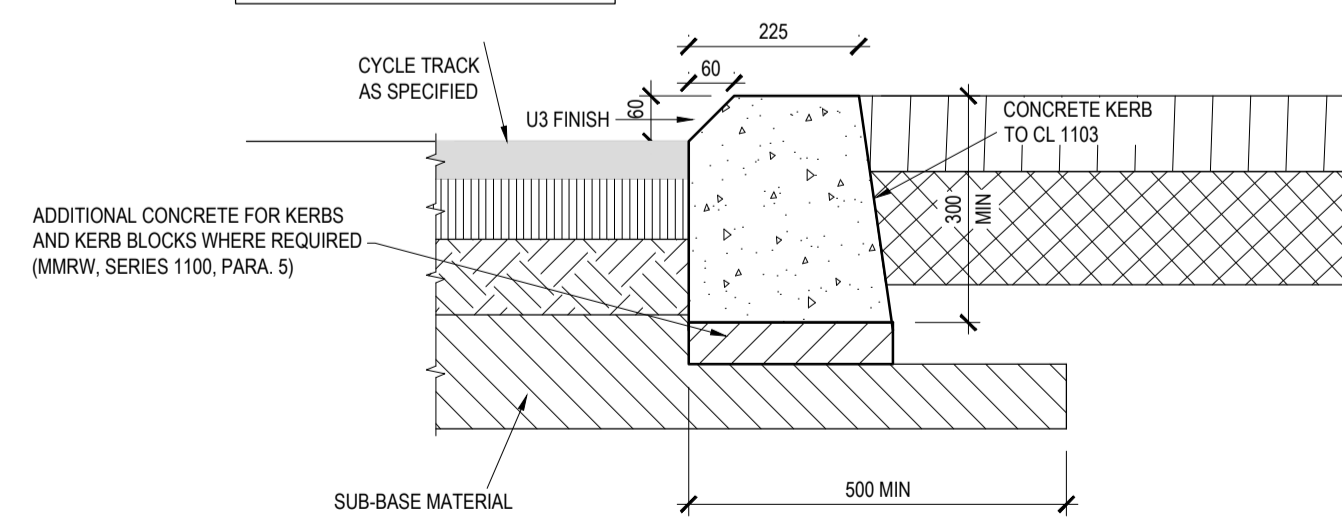
CYCLEWAY & FOOTPATH TACTILE PAVING PLAN

SCALE 1:50

FIGURE 2F

NOTES

- IN SITU CONCRETE KERBS SHALL COMPLY WITH THE RECOMMENDATIONS OF BS 5931
- KERBS SHALL BE PROTECTED FROM THE EFFECTS OF ADVERSE WEATHER UNTIL CURED
- KERBS TO BE GENERALLY IN ACCORDANCE WITH RCD1100/2 AND EXTEND MINIMUM 50mm INTO SUB-BASE



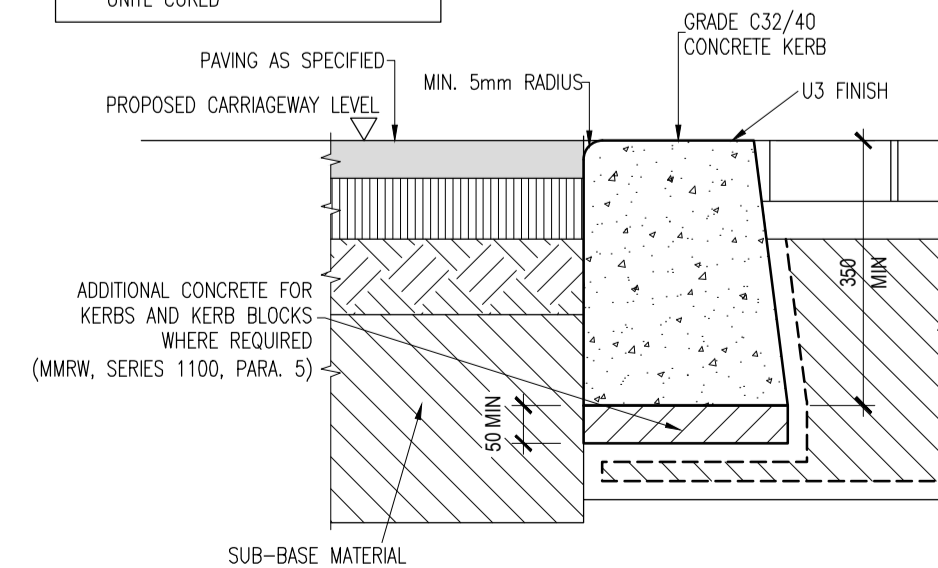
PROPOSED INSITU CONCRETE KERB CHAMFERED

SCALE 1:10

FIGURE 2G

NOTES

- IN SITU CONCRETE KERBS SHALL COMPLY WITH THE RECOMMENDATIONS OF BS 5931
- KERBS SHALL BE PROTECTED FROM THE EFFECTS OF ADVERSE WEATHER UNTIL CURED



FLUSH KERB DETAIL

SCALE 1:10

FIGURE 2H

1	15-05-2026	STAGE 3 LR0 SUBMISSION	PV	NGC
0	13-02-2026	STAGE 2 LR0 SUBMISSION	GK	NGC
rev	date	description	by	chkd.

STATUS CODES	
purpose	acceptance
P3 - PLANNING PERMISSION	S - ISSUED

DBFL
CONSULTING ENGINEERS

T: +353 1 400 4000 | E: info@dbfl.ie | W: www.dbfl.ie

DUBLIN | CORK | GALWAY | WATERFORD

project ref.
SITE AT WHITESTOWN WAY - TALLAGHT

drawing title
TYPICAL ROAD CONSTRUCTION DETAILS SHEET 2

client
ARP 4.2 SUSTAINABLE COMMUNITIES (IRELAND) FUND

designed by	author	scale	sheet size
NGC	GK	1:500	A1
drawing no.	revision		
240192-X-04-Z00-DR-XXX-DBFL-CE-5202	1		