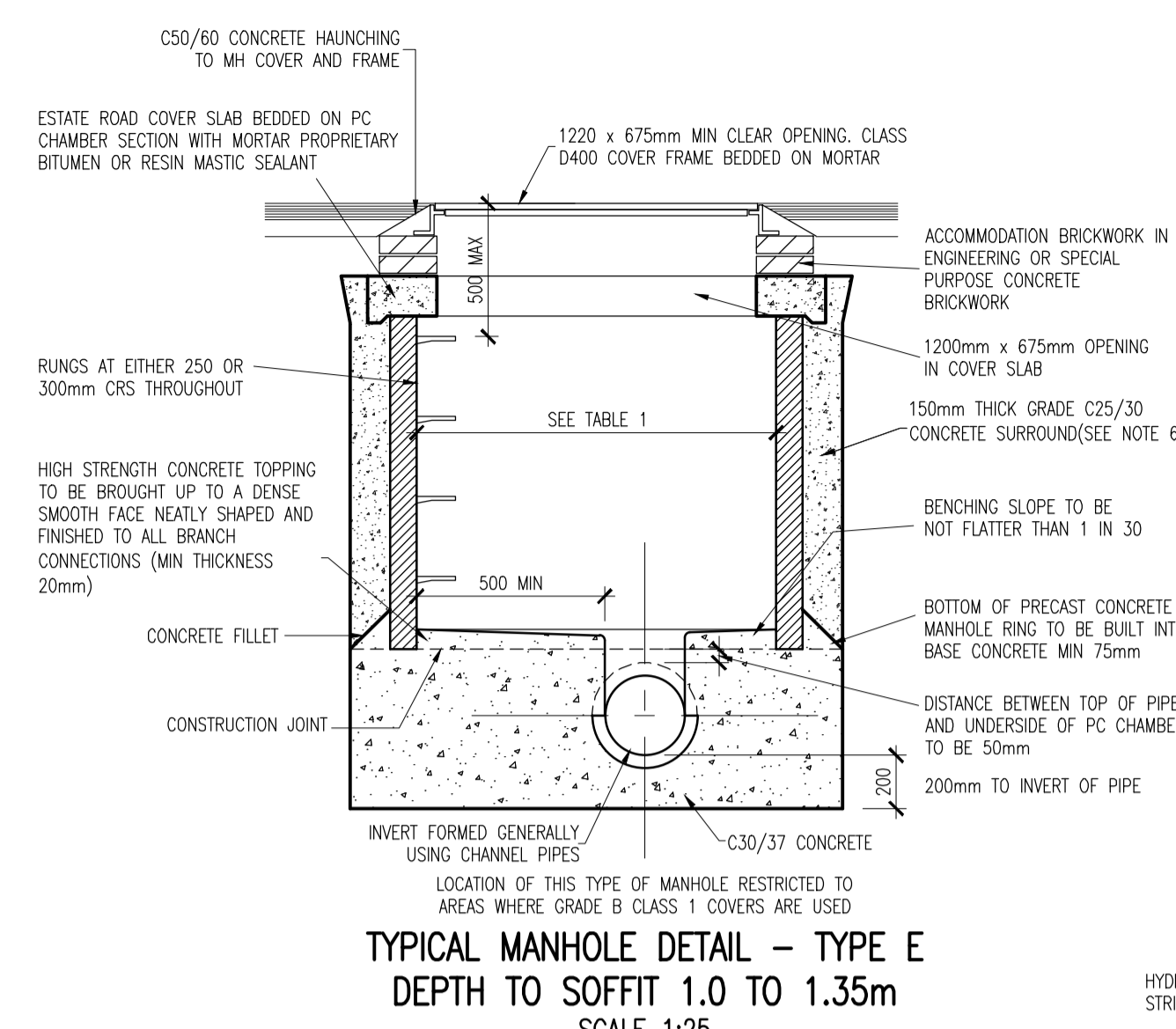
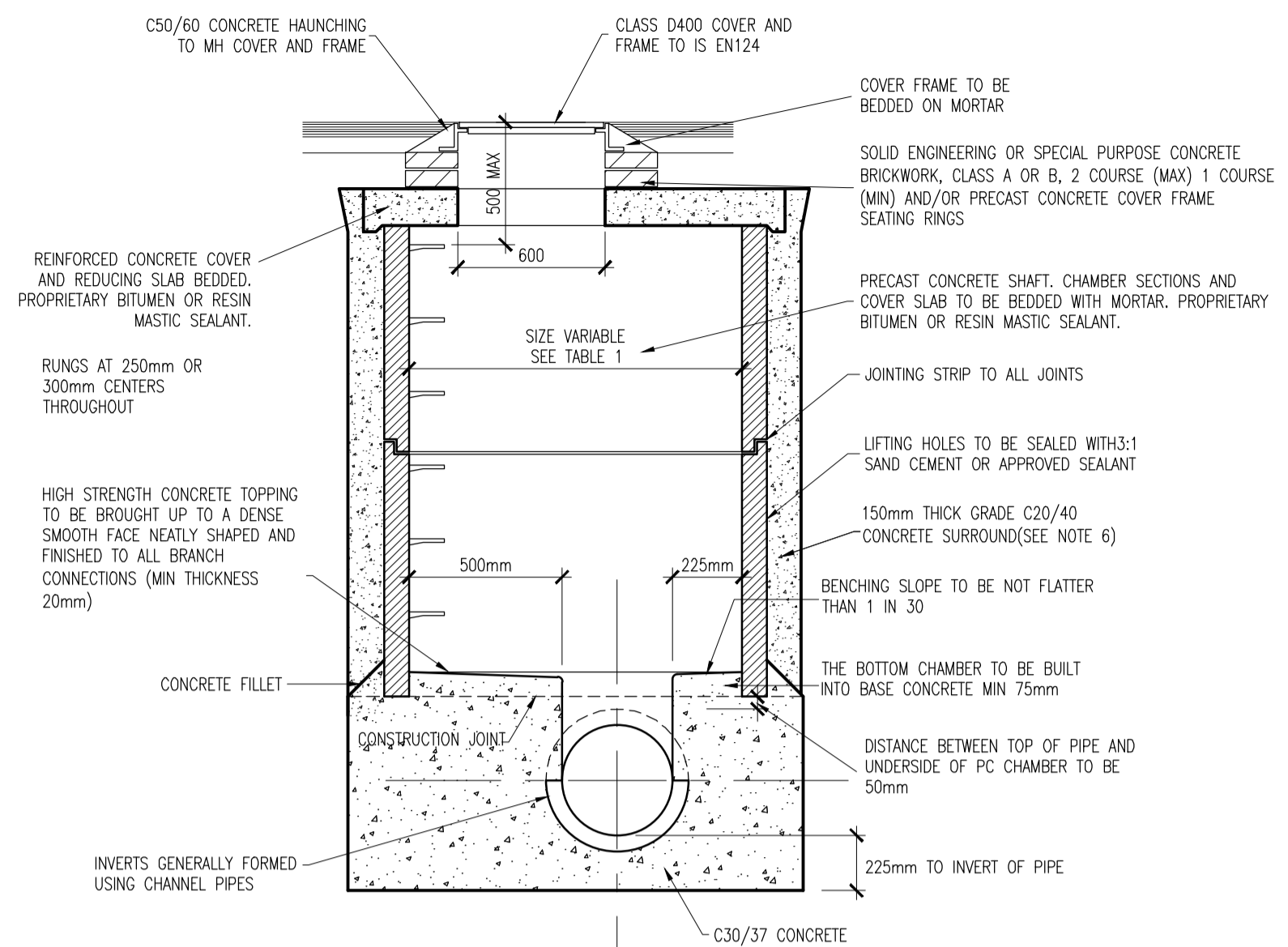
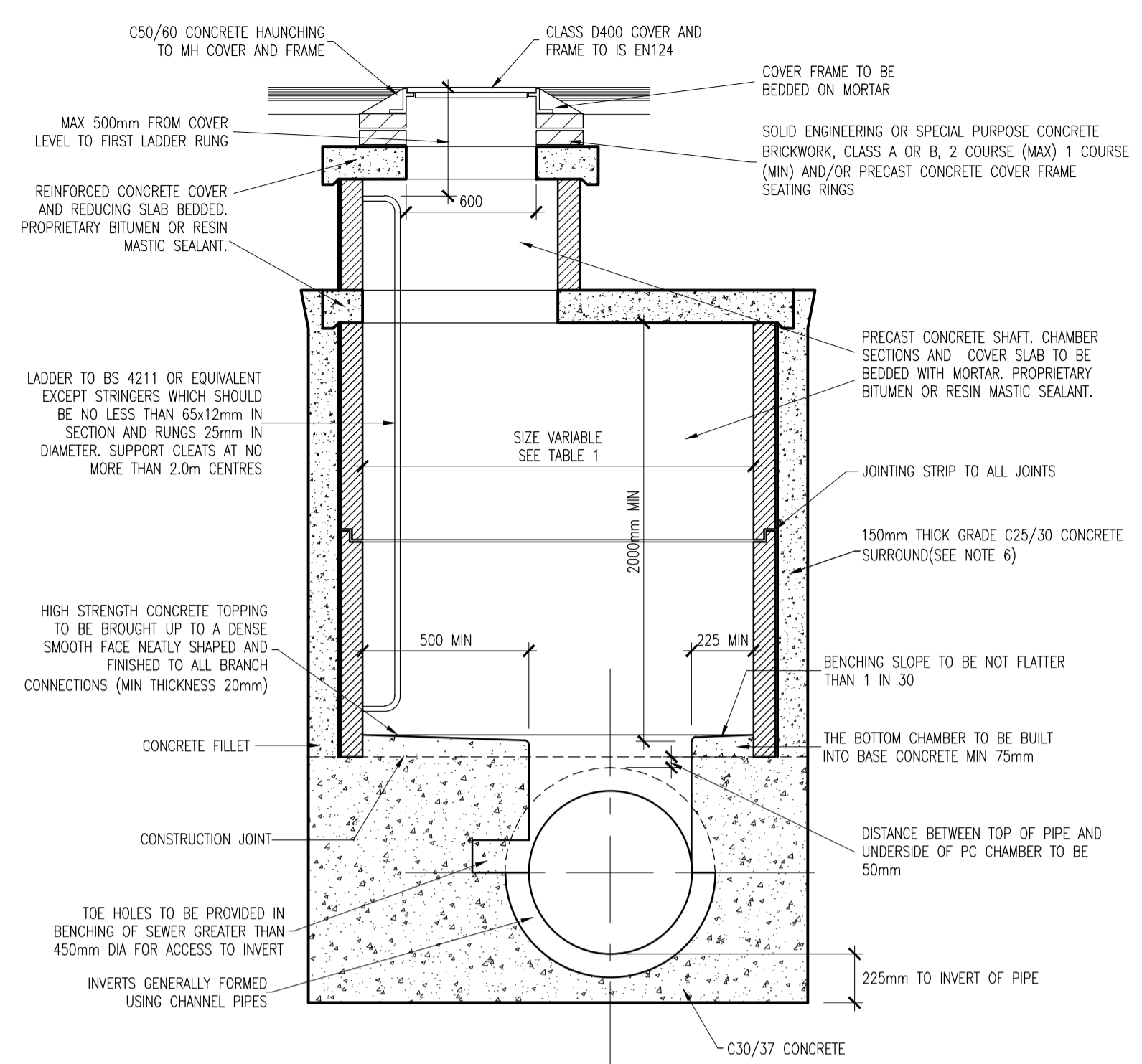


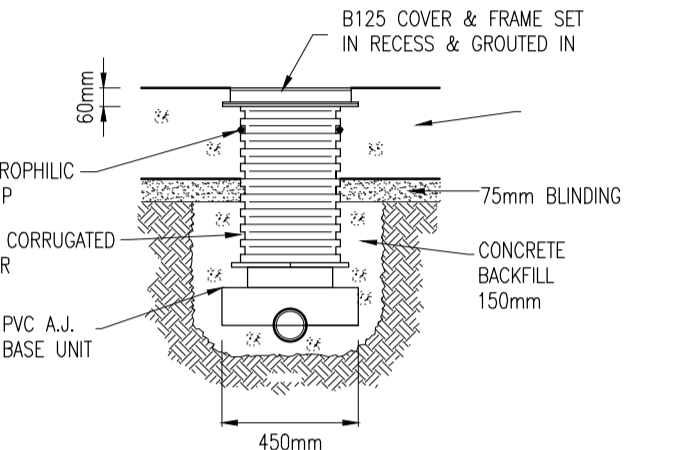
© COPYRIGHT OF THIS DRAWING IS RESERVED BY DBFL CONSULTING ENGINEERS. NO PART SHALL BE REPRODUCED OR TRANSMITTED WITHOUT THEIR WRITTEN PERMISSION.
 NO CHANGES OF WHATSOEVER NATURE ARE TO BE MADE TO ANY DETAILS SET OUT OR CONTAINED IN ANY DBFL SPECIFICATIONS OR DRAWINGS UNLESS THE EXPRESS CONSENT HAS BEEN OBTAINED IN ADVANCE, IN WRITING, FROM DBFL.

NOTES:
 GENERAL NOTES:

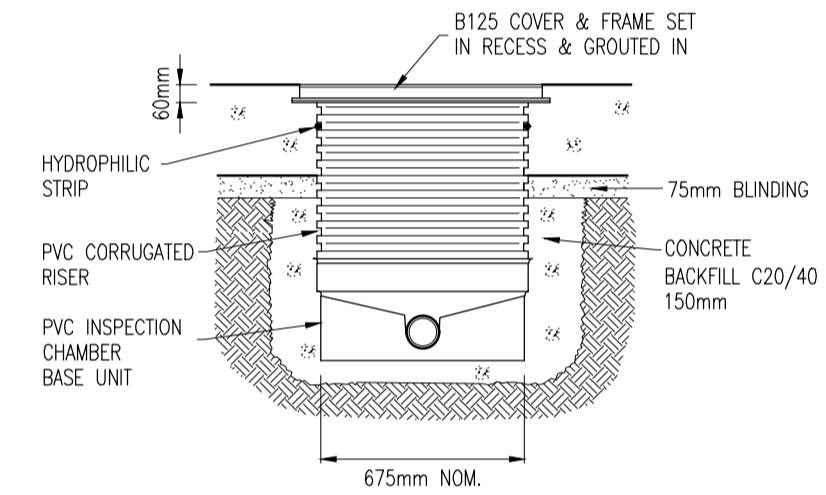
1. ALL DRAWINGS TO BE CHECKED BY CONTRACTOR ON SITE AND ENGINEER INFORMED OF DISCREPANCIES BEFORE WORK COMMENCES.
2. ALL DIMENSIONS AND LEVELS ARE IN METRES UNLESS NOTED OTHERWISE.
3. ALL LEVELS ARE IN METERS AND ARE RELATED TO ORDNANCE DATUM. CO-ORDINATES RELATE TO NATIONAL GRID.
4. CONTRACTOR SHALL SATISFY THEMSELVES AS TO THE ACCURACY OF PAVEMENT LEVELS ON SITE PRIOR TO COMMENCEMENT OF WORKS ON SITE.
5. ALL WASTEWATER INFRASTRUCTURE INCLUDING FOUL SEWERS, CONNECTIONS AND MANHOLES TO SAME SHALL COMPLY WITH AND BE CONSTRUCTED IN ACCORDANCE WITH THE IRISH WATER CONNECTION AND DEVELOPER SERVICES WASTEWATER INFRASTRUCTURE STANDARD DETAILS DOCUMENT IW-CDS-5030-01.
6. FOUL SEWERS PIPE MATERIAL TO BE IN ACCORDANCE WITH SECTION 3.13 OF THE IRISH WATER CODE OF PRACTICE WHICH IS REPRODUCED IN SPECIFICATION APPENDIX 5.1.
7. SURFACE WATER SEWER PIPE MATERIAL TO BE CLASS H CONCRETE TO EN1916 & IS 6 2004 IN ACCORDANCE WITH THE GREATER DUBLIN REGIONAL CODE OF PRACTICE FOR DRAINAGE WORKS.
8. LOCATION AND INVERT LEVELS OF EXISTING MANHOLES AND OUTFALL POINTS TO BE VERIFIED BY CONTRACTOR PRIOR TO COMMENCEMENT OF DRAINAGE WORKS.
9. ALL COVER LEVELS TO MATCH FINISHED ROAD/VERGE/FOOTPATH/CYCLETRACK LEVELS UNLESS OTHERWISE STATED.
10. ALL SURFACE WATER DRAINAGE WORKS/CONNECTIONS TO COMPLY WITH THE REQUIREMENTS OF THE LOCAL AUTHORITY. CONTRACTOR TO INCLUDE FOR CCTV SURVEY OF ALL FOUL & SURFACE WATER SEWERS / DRAINAGE UPON COMPLETION OF SAME.
11. MANHOLE COVERS IN LANDSCAPED AREAS TO BE SURROUNDED BY A CONCRETE PLINTH, 200MM ALL ROUND AND 100MM DEEP FORMED WITH C20/25 CONCRETE, 20MM AGGREGATE SIZE, BEDDED IN CLAUSE 804 MATERIAL.



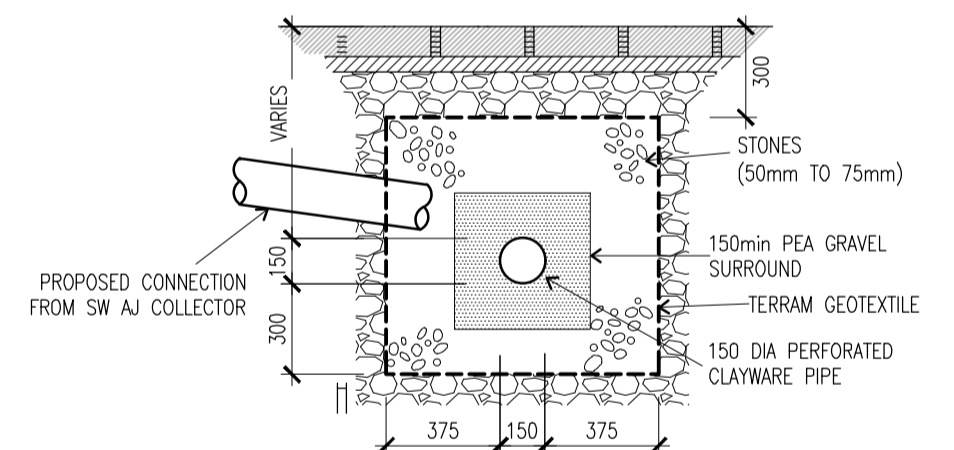
TYPICAL MANHOLE DETAIL - TYPE E
 DEPTH TO SOFFIT 1.0 TO 1.35m
 SCALE 1:25



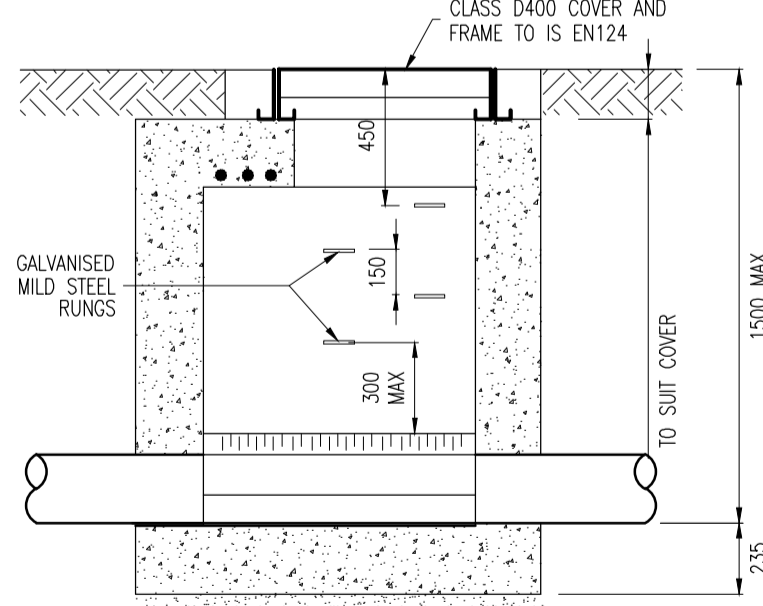
A.J. DETAIL (600mm MAX DEPTH)



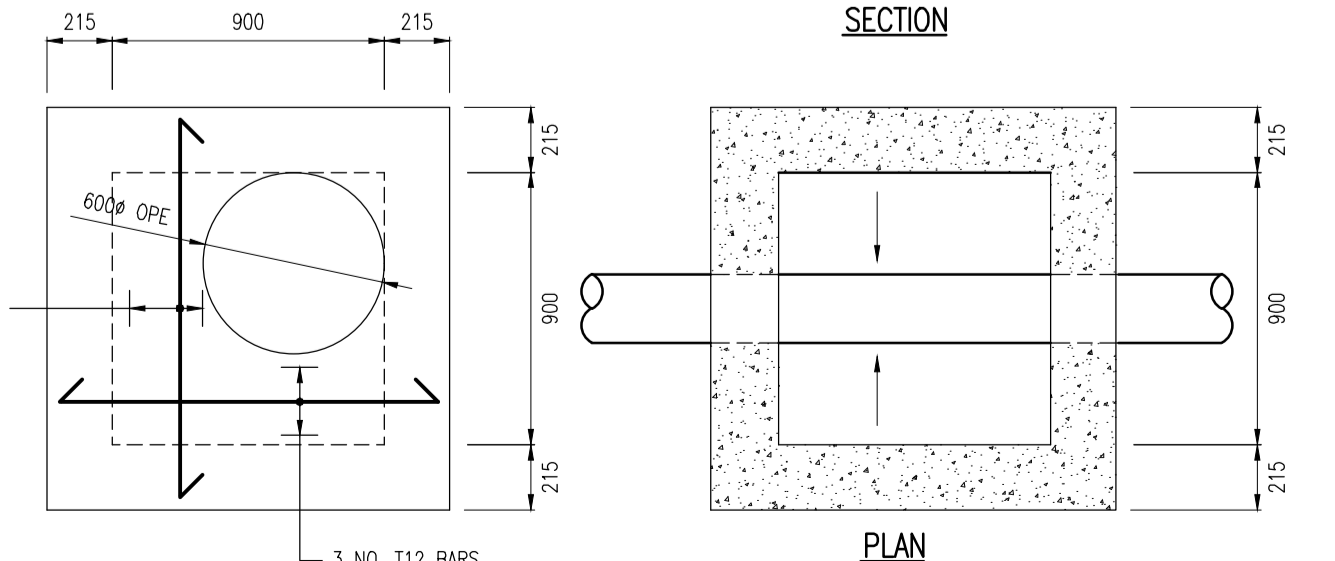
INSPECTION CHAMBER (1000mm MAX DEPTH)



TYPICAL FILTER DRAIN

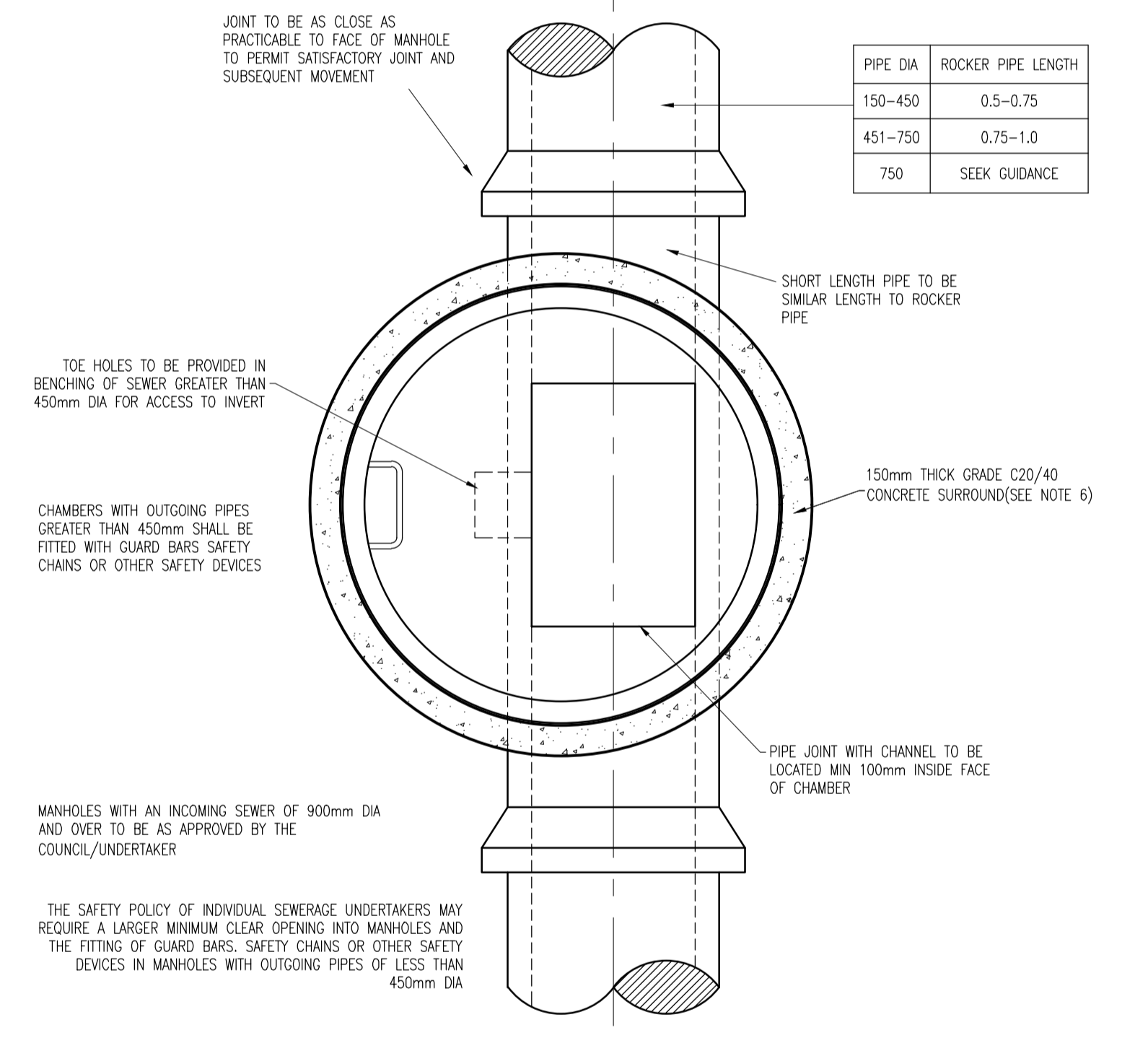


SECTION

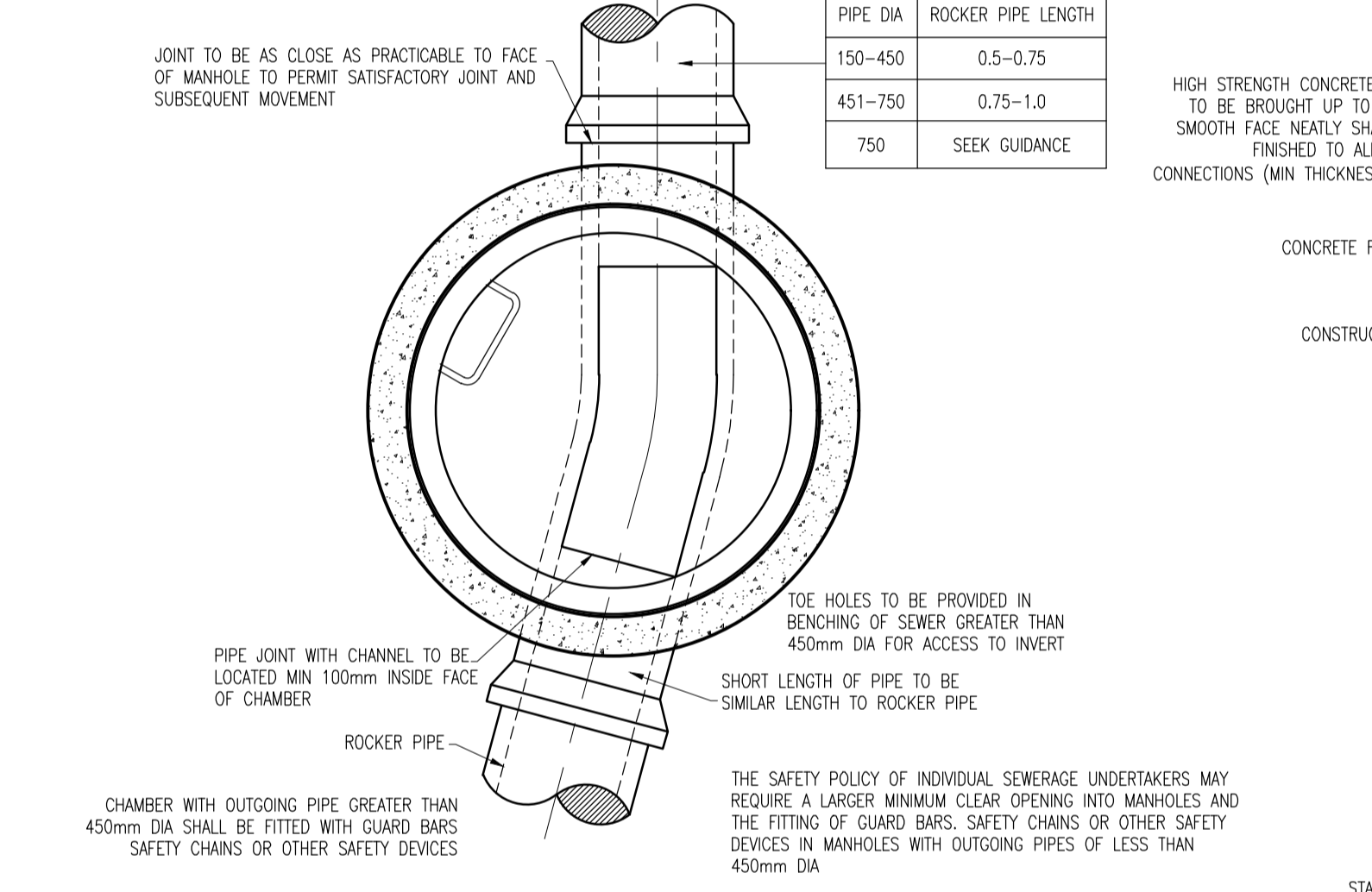


PLAN

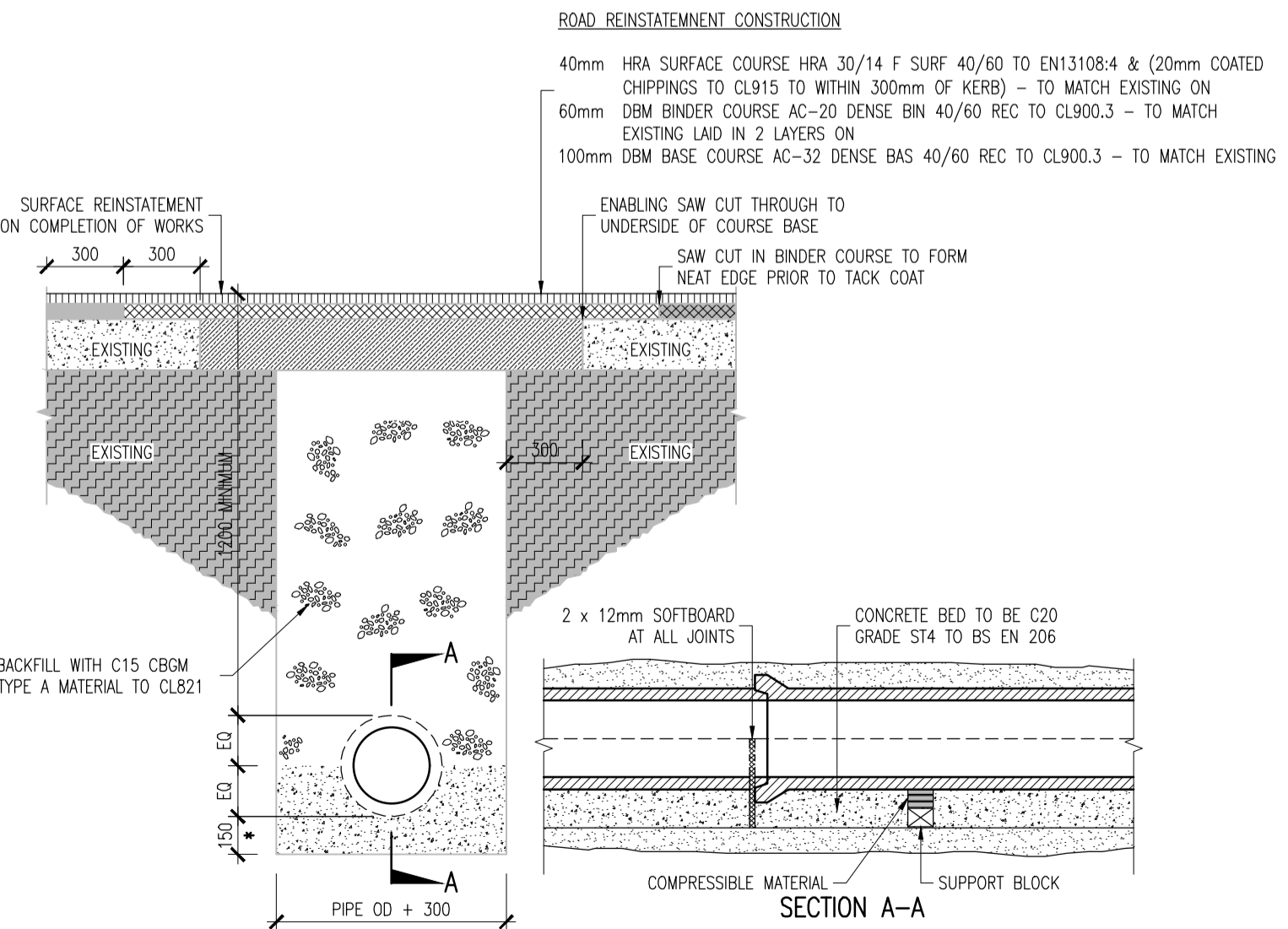
TYPICAL INSITU SHALLOW MANHOLE DETAIL
 SCALE 1:25



TYPICAL MANHOLE DETAIL - TYPE K
 DEPTH TO SOFFIT 3 TO 6m
 SCALE 1:25

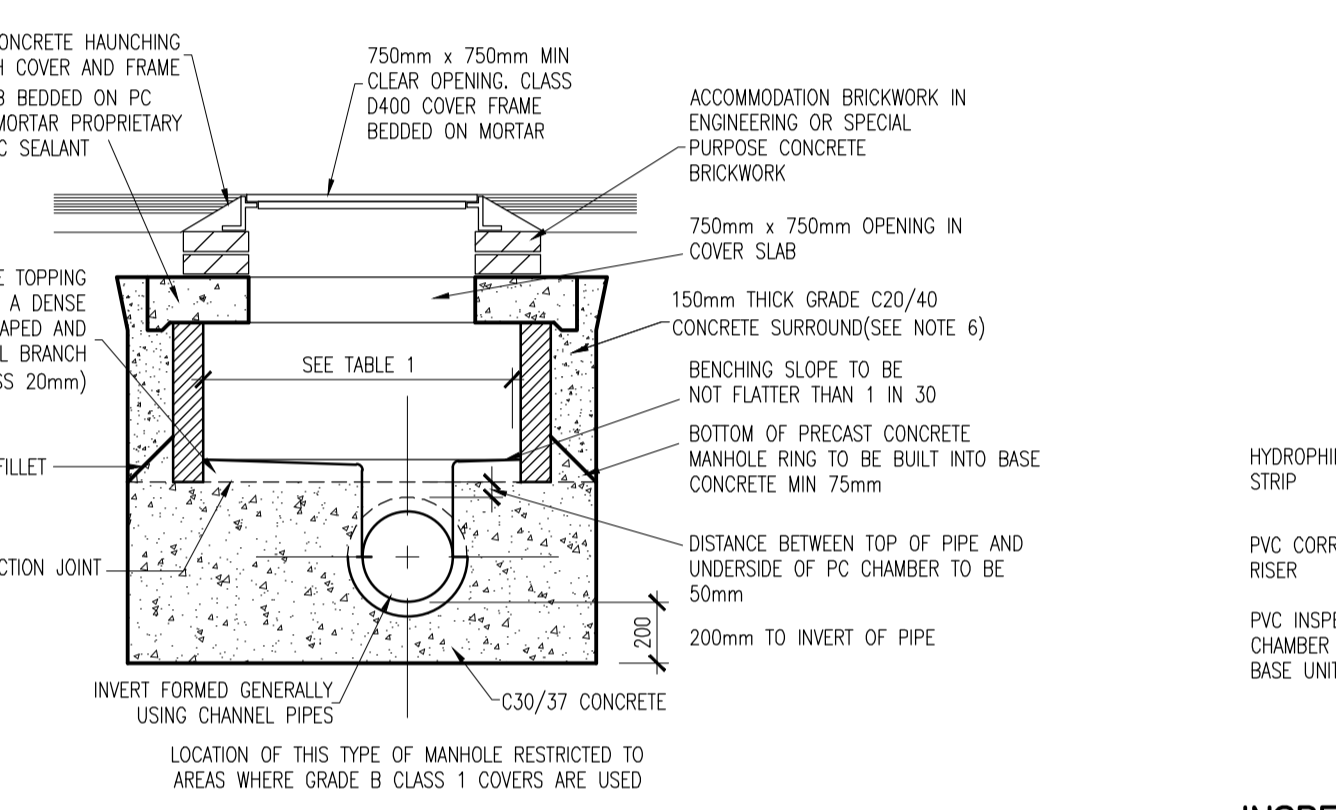


TYPICAL MANHOLE DETAIL - TYPE J
 DEPTH TO SOFFIT 1.35 TO 3m
 SCALE 1:25

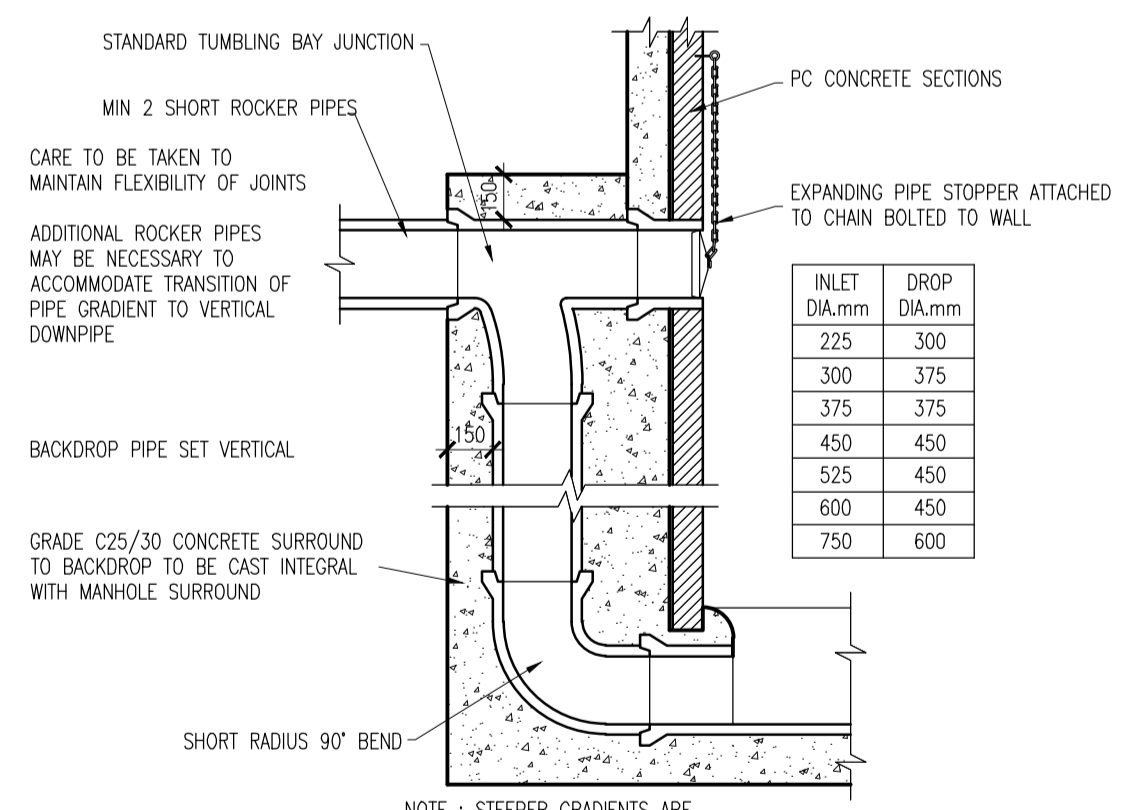


DRAINAGE / DUCT TRENCH AND REINSTATEMENT IN EXISTING ROADS
 SCALE 1:25

PIPE DIA	ROCKER PIPE LENGTH
150-450	0.5-0.75
451-750	0.75-1.0
750	SEEK GUIDANCE



TYPICAL MANHOLE DETAIL - TYPE F
 DEPTH TO SOFFIT LESS THAN 1.0m
 SCALE 1:25



TYPICAL VERTICAL BACKDROP DETAIL
 SCALE 1:25

DIAMETER OF LARGEST PIPE IN MANHOLE (mm)	CHAMBER SECTION DIAMETER (mm)
LESS THAN 375	1200
375 - 450	1350
500 - 700	1500
750 - 900	1800
> 750	PIPE SIZE + 1.3m

TABLE 1

rev	date	description	by	chkd.
1	15-05-2026	STAGE 3 LRD SUBMISSION	PV	NGC
0	13-02-2026	STAGE 2 LRD SUBMISSION	GK	NGC

STATUS CODES
 purpose acceptance
 P3 - PLANNING PERMISSION S - ISSUED

DBFL
 CONSULTING ENGINEERS

T: +353 1 400 4000 | E: info@dbfl.ie | W: www.dbfl.ie
 DUBLIN | CORK | GALWAY | WATERFORD

project ref.
 SITE AT WHITESTOWN WAY - TALLAGHT

drawing title
 TYPICAL DRAINAGE DETAILS - SHEET 1

client
 ARP 4.2 SUSTAINABLE COMMUNITIES (IRELAND) FUND

designed by	author	scale	sheet size
NGC	GK	AS SHOWN	A1
drawing no.	revision	240192-X-05-200-XXX-DR-DBFL-CE-5301	1