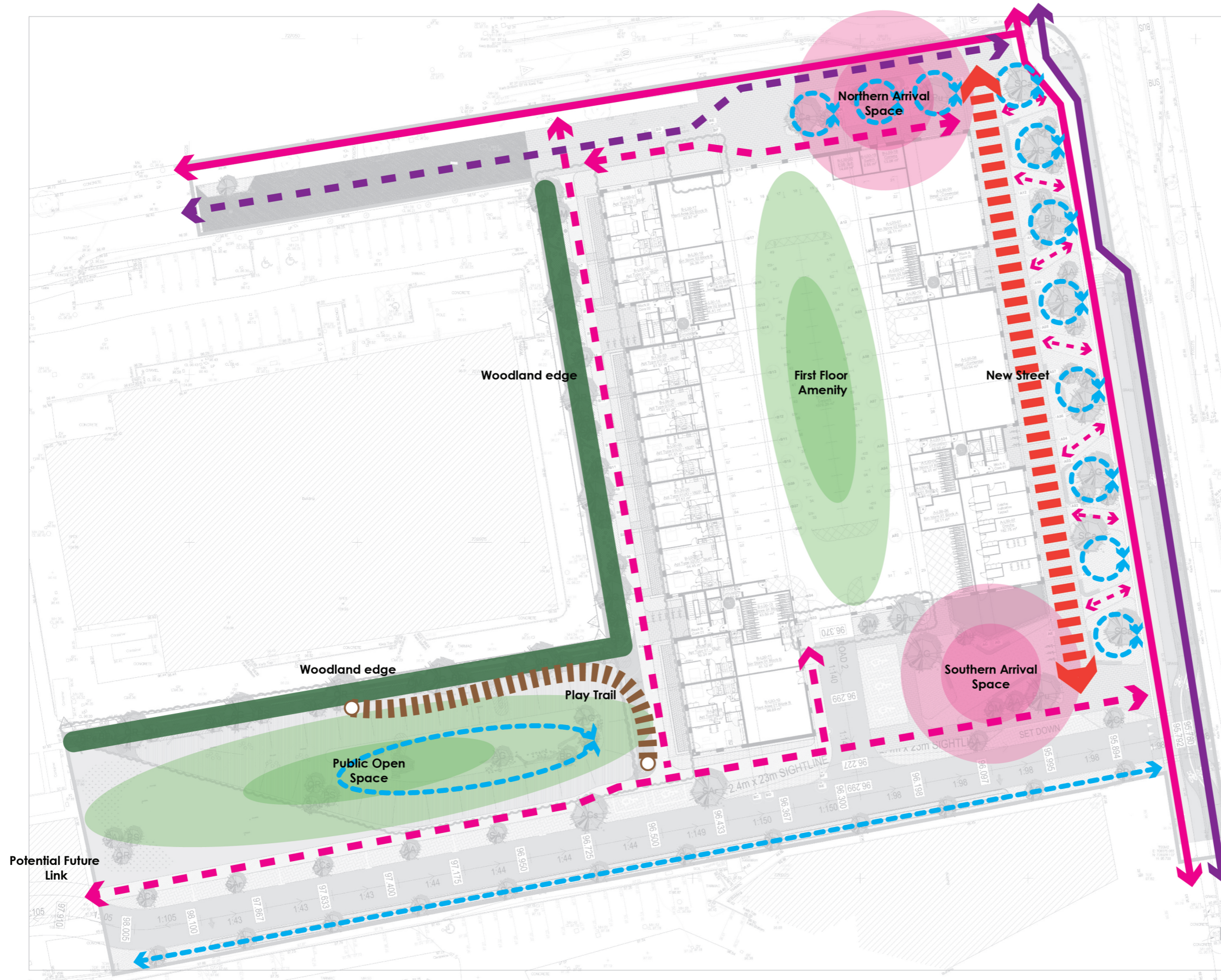


Outline Proposal

Progression of the Concept



- Existing Cycle Route
- Existing Pedestrian Route
- Proposed Cycle Route
- Proposed Pedestrian Route
- New Street Frontage
- SuDS Intervention
- Play Trail

The landscape design has evolved as an integrated framework that brings together movement, open space, SuDS, planting, and play to create a coherent and legible public realm. The design responds to the surrounding context while establishing a strong internal structure for the site.

New pedestrian and cycle connections improve permeability and strengthen links to the wider active travel network. A pedestrian-focused street forms a key organising element within the scheme and is indicated on the diagram to the left with a dashed red line. The street is designed as a landscaped route incorporating street trees, planting beds, and informal seating.

SuDS features are embedded within open spaces to manage surface water in a multi-functional manner, contributing to amenity, biodiversity, and climate resilience. These features include the central detention basin, low-flow channel, rain gardens, planting beds, permeable paving, and SuDS planting integrated throughout the public realm. A play trail is integrated across the site, encouraging movement and informal play. A woodland edge and planting structure defines site boundaries and reinforces green infrastructure links, while a clear hierarchy of public and communal open spaces creates a connected landscape network.

The landscape proposals have been further refined and presented as part of the Stage 2 LRD consultation process with South Dublin County Council. Comments received from the Parks Department through the LRD Opinion have informed the ongoing development of the landscape proposals, and these comments have been addressed within this report and the accompanying drawing pack. This confirms that the design progression, including the integration of SuDS, play provision, and green infrastructure, has successfully carried through from concept stage to the developed scheme.

Landscape Masterplan

LRD Stage 3 - May 2026



Landscape Masterplan

Ground Floor



Landscape Masterplan

First Floor

